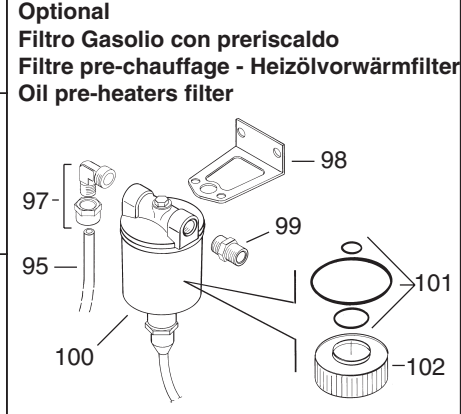
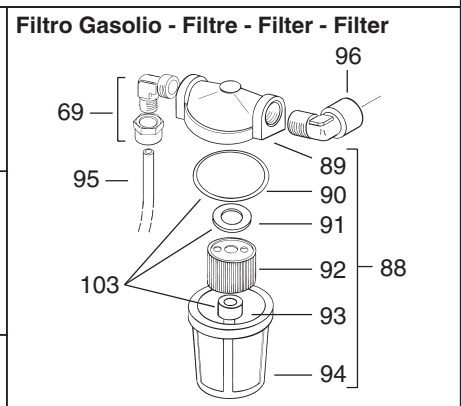
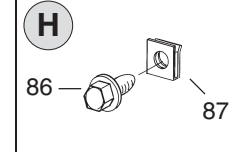
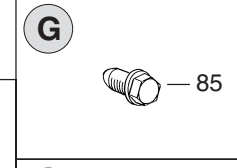
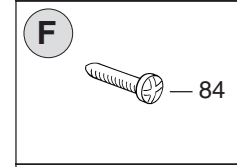
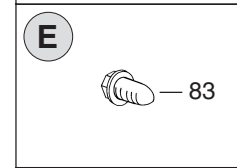
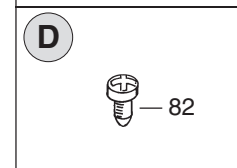
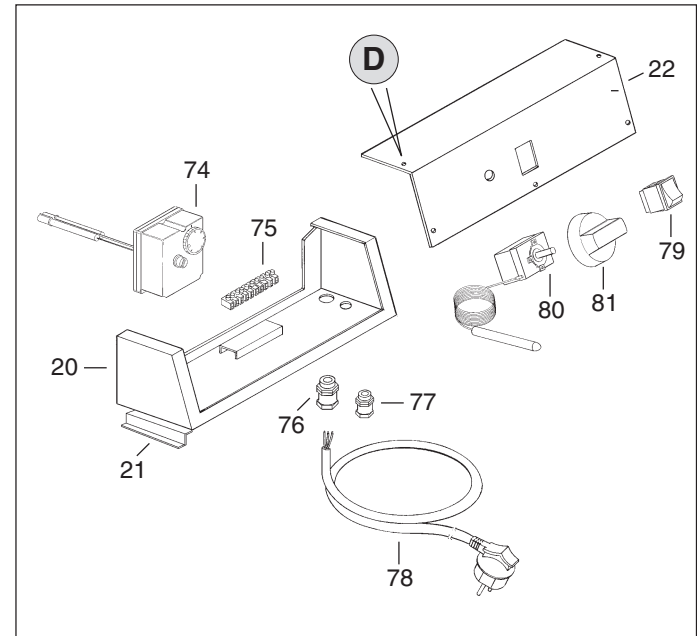
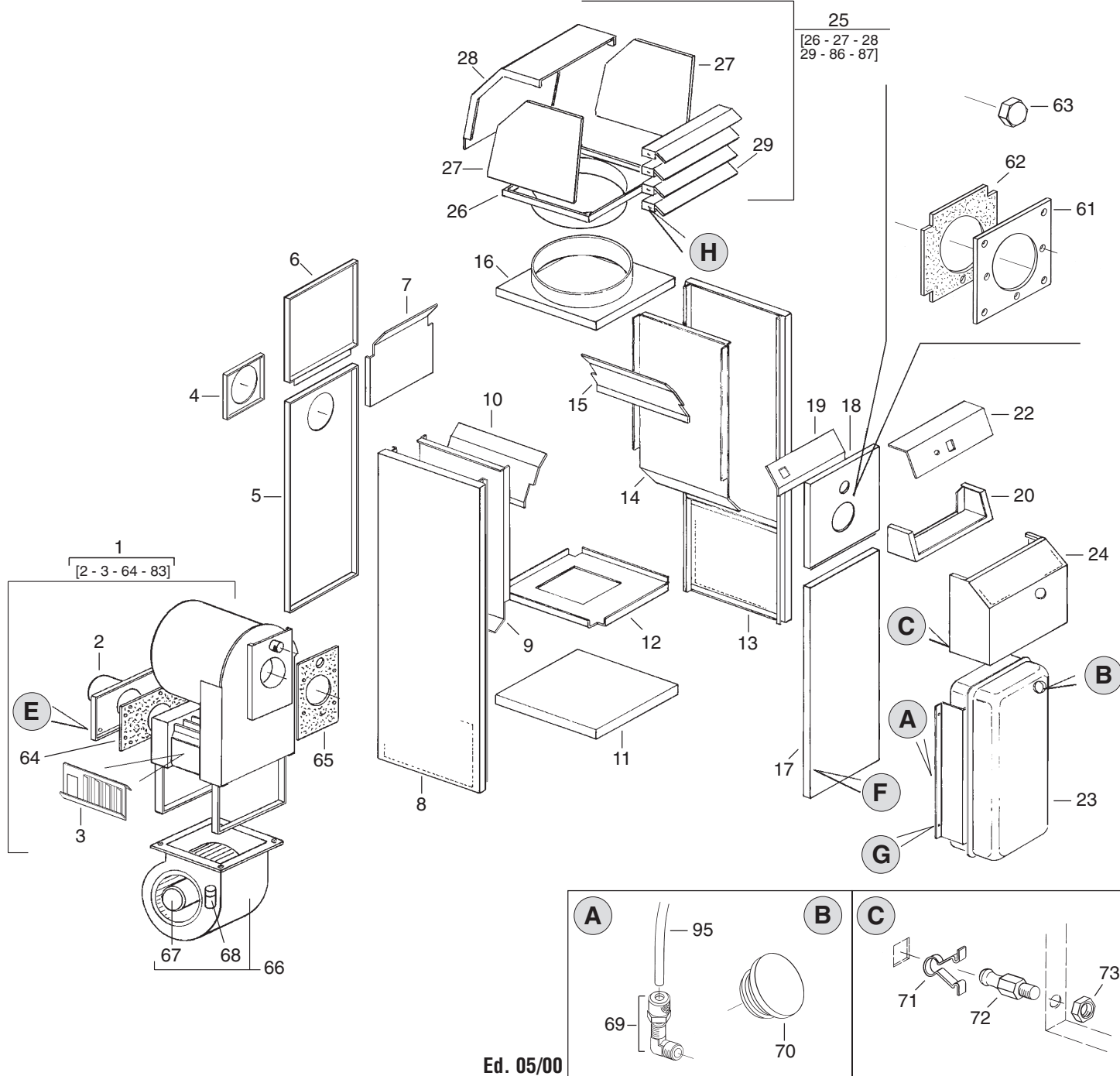


CONFORT 1G - 2G



Da matr. n.	De matr. no	Confort 1G = 60101801
Von masch. nr	From number	

Pos.	COD.	LEGENDA	LEGENDE	NOMENKLATUR	PART LIST	1 G	2 G
1	G01120	Camera combustione	Chambre de combustion	Brennkammer	Combustion chamber	●	—
1	G01121	Camera combustione	Chambre de combustion	Brennkammer	Combustion chamber	—	●
2	G01150	Sportello ispezione	Porte visite	Inspectionklappe	Inspection door	●	—
2	G01151	Sportello ispezione	Porte visite	Inspectionklappe	Inspection door	—	●
3	G01850	Turbolenziatore	Turbulateur	Verwirbelungsplatte	Baffle plate	●	—
3	G01856	Turbolenziatore	Turbulateur	Verwirbelungsplatte	Baffle plate	—	●
4	G01131	Flangia camino Ø 150	Bride cheminée Ø 150	Ø 150 Rauchfang Flansch	Chimney flange Ø 150	●	●
5	G01142	Pannello camino	Panneau cheminée	Rauchfang Platte	Chimney panel	●	—
5	G01143	Pannello camino	Panneau cheminée	Rauchfang Platte	Chimney panel	—	●
6	G01144	Pannello posteriore superiore	Panneau côte cheminée superieur	Obere Beplankung Kamin Seite	Upper rear panel	●	—
6	G01145	Pannello posteriore superiore	Panneau côte cheminée superieur	Obere Beplankung Kamin Seite	Upper rear panel	—	●
7	G01209	Convogliatore posteriore	Défecteur d'air posterieur	Hintere Luftleitblech	Rear conveyor	●	—
7	G01210	Convogliatore posteriore	Défecteur d'air posterieur	Hintere Luftleitblech	Rear conveyor	—	●
8	G01148	Pannello laterale sinistro	Panneau lateral gauche	Seiten Beplankung links	Left side panel	●	—
8	G01149	Pannello laterale sinistro	Panneau lateral gauche	Seiten Beplankung links	Left side panel	—	●
9	G01205	Pannello interno sinistro	Panneau interieur gauche	Untere Beplankung links	Left inner panel	●	—
9	G01206	Pannello interno sinistro	Panneau interieur gauche	Untere Beplankung links	Left inner panel	—	●
10	G01207	Deflettore laterale sinistro	Défecteur d'air gauche	Luftleitblech links	Left side deflector	●	—
10	G01208	Deflettore laterale sinistro	Défecteur d'air gauche	Luftleitblech links	Left side deflector	—	●
11	G01138	Basamento	Base	Kastenträger	Base	●	—
11	G01139	Basamento	Base	Kastenträger	Base	—	●
12	G01215	Pannello ventilatore	Panneau ventilateur	Ventilator Platte	Fan panel	●	—
12	G01216	Pannello ventilatore	Panneau ventilateur	Ventilator Platte	Fan panel	—	●
13	G01146	Pannello laterale destro	Panneau lateral droite	Rechtseitige Beplankung	Right side panel	●	—
13	G01147	Pannello laterale destro	Panneau lateral droite	Rechtseitige Beplankung	Right side panel	—	●
14	G01211	Pannello interno destro	Panneau interieur droite	Untere Beplankung rechts	Right inner panel	●	—
14	G01212	Pannello interno destro	Panneau interieur droite	Untere Beplankung rechts	Right inner panel	—	●
15	G01213	Deflettore laterale destro	Défecteur d'air droite	Luftleitblech rechts	Right side deflector	●	—
15	G01214	Deflettore laterale destro	Défecteur d'air droite	Luftleitblech rechts	Right side deflector	—	●
16	G01140	Pannello superiore Ø 400	Panneau superieur Ø 400	Obere Beplankung Ø 400	Upper panel Ø 400	●	—
16	G01141	Pannello superiore Ø 500	Panneau superieur Ø 500	Obere Beplankung Ø 500	Upper panel Ø 500	—	●
17	G01126	Pannello anteriore inferiore	Panneau frontal inferieur	Vondere Beplankung unten	Bottom front panel	●	—
17	G01127	Pannello anteriore inferiore	Panneau frontal inferieur	Vondere Beplankung unten	Bottom front panel	—	●
18	G01128-1	Pannello bruciatore	Panneau brûleur	Brenner Platte	Burner panel	●	—

CONFORT 1G - 2G

Pos.	COD.	LEGENDA	LEGENDE	NOMENKLATUR	PART LIST	1 G	2 G
18	G01129-1	Pannello bruciatore	Panneau brûleur	Brenner Platte	Burner panel	—	●
19	G01217-1	Convogliatore anteriore	Défecteur d'air antérieur	Luftleitblech vorne	Front conveyor	●	—
19	G01218-1	Convogliatore anteriore	Défecteur d'air antérieur	Luftleitblech vorne	Front conveyor	—	●
20	G01132-1	Supporto quadro elettrico	Support coffret électrique	Elektrokasthalterung	Electrical drawer support	●	—
20	G01133-1	Supporto quadro elettrico	Support coffret électrique	Elektrokasthalterung	Electrical drawer support	—	●
21	G01898	Angolare supporto carter	Support protection brûleur	Brennerdeckplatte Halterung	Burner casing support	●	●
22	G01134	Coperchio quadro el.	Couvercle	Deckplatte	Cover	●	—
22	G01135	Coperchio quadro el.	Couvercle	Deckplatte	Cover	—	●
23	G01119	Serbatoio	Réservoir fuel	Tank	Fuel tank	●	●
24	G01136	Carter bruciatore	Carter brûleur	Abdeckblech seitlich Brenner	Burner casing	●	—
24	G01137	Carter bruciatore	Carter brûleur	Abdeckblech seitlich Brenner	Burner casing	—	●
25	G01122	Testata	Tête rotatif	Verstellbarer Ausblaskopf	Adjustable air head	●	—
25	G01123	Testata	Tête rotatif	Verstellbarer Ausblaskopf	Adjustable air head	—	●
26	G01899	Pannello inferiore testata	Panneau inferieur tête rotatif	Ausblas Beplankung unter	Base air head	●	—
26	G01900	Pannello inferiore testata	Panneau inferieur tête rotatif	Ausblas Beplankung unter	Base air head	—	●
27	G01901	Pannello laterale testata	Panneau lateral tête rotatif	Ausblas Seiten Beplankung	Side panel air head	●	—
27	G01902	Pannello laterale testata	Panneau lateral tête rotatif	Ausblas Seiten Beplankung	Side panel air head	—	●
28	G01903	Pannello superiore testata	Panneau superieur tête rotatif	Ausblas Beplankung oben	Upper panel air head	●	—
28	G01904	Pannello superiore testata	Panneau superieur tête rotatif	Ausblas Beplankung oben	Upper panel air head	—	●
29	G01905	Aletta direzionale testata	Défecteur d'air tête rotatif	Luftleitblech Ausblasseite	Deflector air head	●	—
29	G01906	Aletta direzionale testata	Défecteur d'air tête rotatif	Luftleitblech Ausblasseite	Deflector air head	—	●

Pos.	COD.	LEGENDA	LEGENDE	NOMENKLATUR	PART LIST	1 G	2 G
61	G01098	Piastra bruciatore	Support brûleur	Brennerflansch	Burner support	●	●
62	T10602	Guarnizione isolante	Joint isolant	Isolation Dichtung	Thermal insulation	●	●
63	I25001	Tappo ferro	Bouchon fer	Propfen	Female plug	●	●
64	T10612	Guarnizione isolante	Joint isolant	Isolation Dichtung	Thermal insulation	●	—
64	T10613	Guarnizione isolante	Joint isolant	Isolation Dichtung	Thermal insulation	—	●
65	T10614	Guarnizione isolante	Joint isolant	Isolation Dichtung	Thermal insulation	—	●
66	CG001	Ventilatore DD 10/8	Ventilateur DD 10/8	Ventilator DD 10/8	Fan DD 10/8	●	—
66	CG002	Ventilatore DD 12/9	Ventilateur DD 12/9	Ventilator DD 12/9	Fan DD 12/9	—	●
67	CG003	Motore	Moteur	Motor	Motor	●	—
67	CG004	Motore	Moteur	Motor	Motor	—	●
68	E11203	Condensatore µF 10	Condensateur µF 10	Kondensator µF 10	Condenser µF 10	●	—

CONFORT 1G - 2G

Pos.	COD.	LEGENDA	LEGENDE	NOMENKLATUR	PART LIST	1 G	2 G
68	E11208	Condensatore µF 20	Condensateur µF 20	Kondensator µF 20	Condenser µF 20	—	●
69	I20410	Raccordo 90° 1/4"Mx8	Raccord 90° 1/4"Mx8	Eckanschluss 90° 1/4"Mx8	Connection 90° 1/4"Mx8	●	●
70	I31018	Tappo riempimento	Bouchon de remplissage	Filtergehäuse	Tank plug	●	●
71	M20404	Molla	Ressort	Feder	Spring	●	●
72	M20406	Perno per molla	Pivot pour ressort	Bolzen für Feder	Spring pin	●	●
73	M10704	Dado es. M6	Ecrou M6	Mutter M6	Nut M6	●	●
74	E50720	Bitermostato IMIT TLSC	Bithermostat IMIT TLSC	Kombinations Warmluftregler IMIT TLSC	Bithermostat IMIT TLSC	●	●
75	E20302	Morsettiera 12 el. mmq 6	Barrette de connection 12 el. mmq 6	Klemme 12 el. mmq 6	Terminal board 12 el. mmq 6	●	●
76	E20913	Pressacavo PG11	Presse câble PG11	Kabelführung PG11	Cable fastener PG 11	●	●
77	E20918	Pressacavo PG 9	Presse câble PG 9	Kabelführung PG 9	Cable fastener PG 9	●	●
78	E30419	Cavo elettrico	Cable électrique	Elektro kabel	Power cord	●	●
79	E10102	Commutatore	Commutateur	Schalter	Control knob	●	●
80	CG015	Termostato	Thermostat	Thermostat	Thermostat	●	●
81	C10310	Manopola completa	Bouton thermostat complet	Thermostat Schalter	Thermostat knob complete	●	●
82	M10508	Vite autofilettante TC 8x3/8"	Vis TC 8x3/8"	Schraube TC 8x3/8"	Screw TC 8x3/8"	●	●
83	M10511	Vite autofilettante TE 14x5/8" FR	Vis TE 14x5/8" FR	Schraube TE 14x5/8" FR	Screw TE 14x5/8" FR	●	●
84	M10515	Vite autofilettante TC 8x1"	Vis TC 8x1"	Schraube TC 8x1"	Screw TC 8x1"	●	●
85	M10511	Vite autofilettante TE 14x1/2" FR	Vis TE 14x1/2" FR	Schraube TE 14x1/2" FR	Screw TE 14x1/2" FR	●	●
86	M10510	Vite autofilettante TE 10x1/2" FR	Vis TE 10x1/2" FR	Schraube TE 10x1/2" FR	Screw TE 10x1/2" FR	●	●
87	M20402	Piastrina	Ecrou	Mutter	Nut	●	●
88	T20201	Filtro	Filtre	Filter	Filter	●	●
89	T20205	Coperchio filtro	Couvercle filtre	Filterhaube	Filter cover	●	●
90	T20202	OR	OR	OR	OR	●	●
91	T20214	Guarnizione	Joint	Dichtung	Seal	●	●
92	T20206	Cartuccia filtro	Cartouche filtre	Filterelement	Filter cartridge	●	●
93	T20213	Guarnizione Inferiore	Joint inferieur	Untere Oelfilterdichtung	Lower filter	●	●
94	T20212	Bicchiera filtro	Cuve filtre	Filtergehäuse	Filter housing	●	●
95	I40306	Tube rilsan Ø 8	Tuyau Rilsan Ø 8	Rilsan Rohr Ø 8	Rilsan pipe Ø 8	●	●
96	I20301	Gomito 1/4" G 1/4" M-F	Raccord 90° G 1/4" M-F	Eckanschluss 90° G 1/4" M-F	Connection 90° G 1/4" M-F	●	●
97	I20412	Raccordo 90° 3/8"Mx8	Raccord 90° 3/8"Mx8	Eckanschluss 90° 3/8"Mx8	Connection 90° 3/8"Mx8	●	●
98	T20224	Supporto filtro	Support	Stütze	Filter support	●	●
99	I20103	Nipplo FE 3/8"M-1/4"M	Raccord 3/8"- 1/4"	Nippel 3/8"- 1/4"	Nipple 3/8"- 1/4"	●	●
100	T20209	Filtro gasolio c/preriscaldamento 3/8"	Filtre pre-chauffage 3/8"	Heizölvorwärmfilter 3/8"	Oil pre-heaters filter 3/8"	●	●
101	T20231	Kit OR filtro	KIT OR	KIT OR	OR KIT filter	●	●
102	T20230	Cartuccia filtro	Cartouche filtre	Filterelement	Filter cartridge	●	●
103	T 20234	Kit OR filtro	KIT OR	KIT OR	OR KIT filter	●	●